



P/F



Tank



Truck

### LOAD CELL



### FEATURES

- Stainless steel construction
- OIML C3 Approved (OIML R60)
- Hermetically sealed
- Ex ia IIC T4 Approved
- Protection Class IP68

### OPTION

- Ex ia IIC T4 Approved
- OIML C3 Approved (OIML R60)
- Protection Class IP68

### ACCESSORY OPTION

- Accessory set

### SPECIFICATION

Capacity		tf	10, 20, 25, 30, 50, 100	
Rated Output		mV / V	2.0 ± 0.005	
Zero Balance		mV / V	0.0 ± 0.020	
Accuracy Class		-	D3	C3
Non-Linearity		% R.O.	≤ 0.03	≤ 0.02
Hysteresis		% R.O.	≤ 0.03	≤ 0.02
Combined Error		% R.O.	≤ 0.03	≤ 0.02
Repeatability		% R.O.	≤ 0.02	≤ 0.01
Creep for 30min.		% R.O.	≤ 0.03	≤ 0.017
Return for 30min.		% R.O.	≤ 0.03	≤ 0.017
Resolution		-	≤ 1/3000	≤ 1/5000
Division		mV / V	0.00067	0.0004
Temperature Effect on	-Zero Value	%/10°C	≤ 0.03	≤ 0.014
	-Output Value	%/10°C	≤ 0.03	≤ 0.011
Excitation	-Recommended	V	10	
	-Maximum	V	15	
Resistance	-Input	Ω	350 ± 3.5	
	-Output	Ω	350 ± 3.5	
	-Insulation	MΩ	> 2000	
Compensated Temperature Range		°C	- 10 to + 40	
Operating Temperature Range		°C	- 40 to + 70	
Material & Plate		-	Stainless steel	
Cable Specification		-	ø8 x 4P x 10M, ø8 x 4P x 25M (P.V.C)	
			ø8 x 6P x 12M (Urethane)	
Safety Output		% R.O.	150% R.O.	



P/F

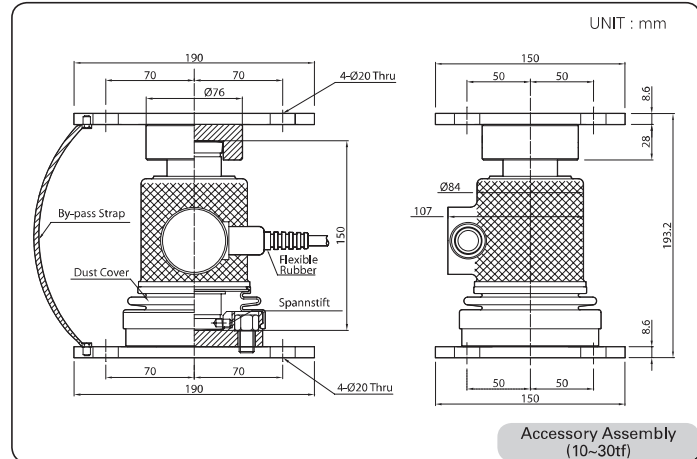
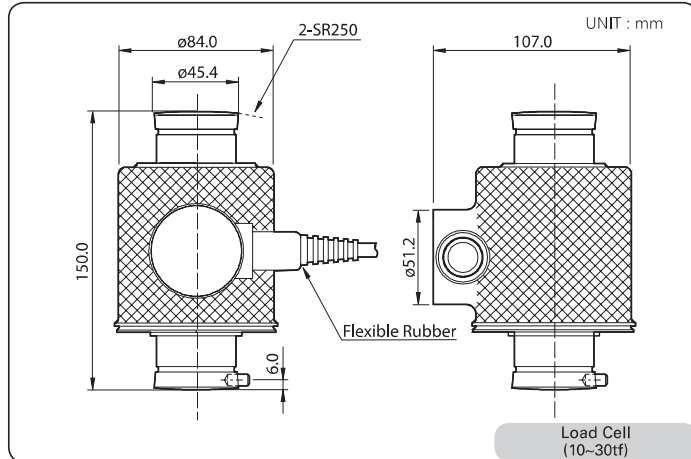


Tank



Truck

### ● DIMENSION

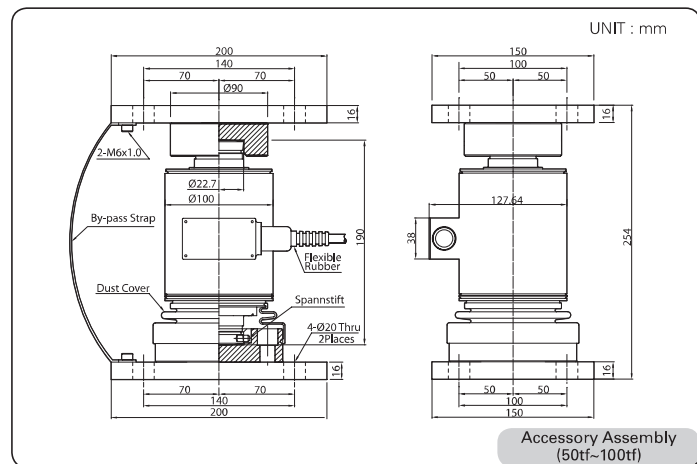
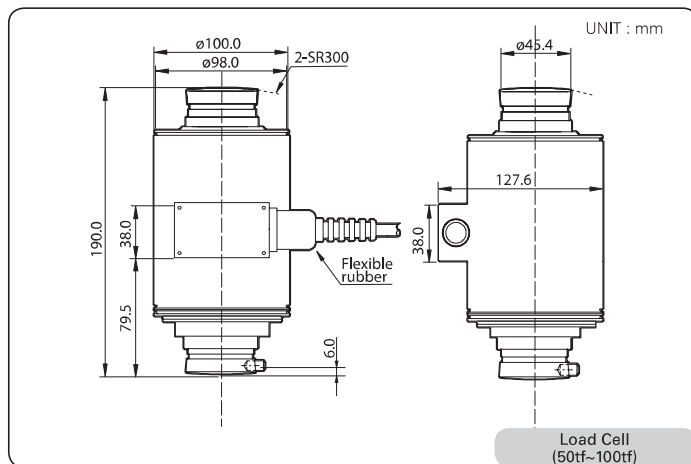


### ● ACCESSORY FEATURES

- Easy Load Cell replacement
- Appropriate for tank and truck application
- Loading, mounting bearing included
- Designed for safety
- Anti Load Cell rotation system
- Suitable for moisture environments
- Anti-lightning strap constitution

### ● MANUAL

- Fix the mounting plate on the surface
- Check the level of the mounting plate
- Join the dust cover with the lower bearing
- Place the Load Cell over the lower bearing
- Assemble the loading accessory set with the Load Cell



### ● ACCESSORY FEATURES

- Easy Load Cell replacement
- Appropriate for tank and truck application
- Loading, mounting bearing included
- Designed for safety
- Anti Load Cell rotation system
- Suitable for moisture environments
- Anti-lightning strap constitution

### ● MANUAL

- Fix the mounting plate on the surface
- Check the level of the mounting plate
- Join the dust cover with the lower bearing
- Place the Load Cell over the lower bearing
- Assemble the loading accessory set with the Load Cell